

Starter_failure

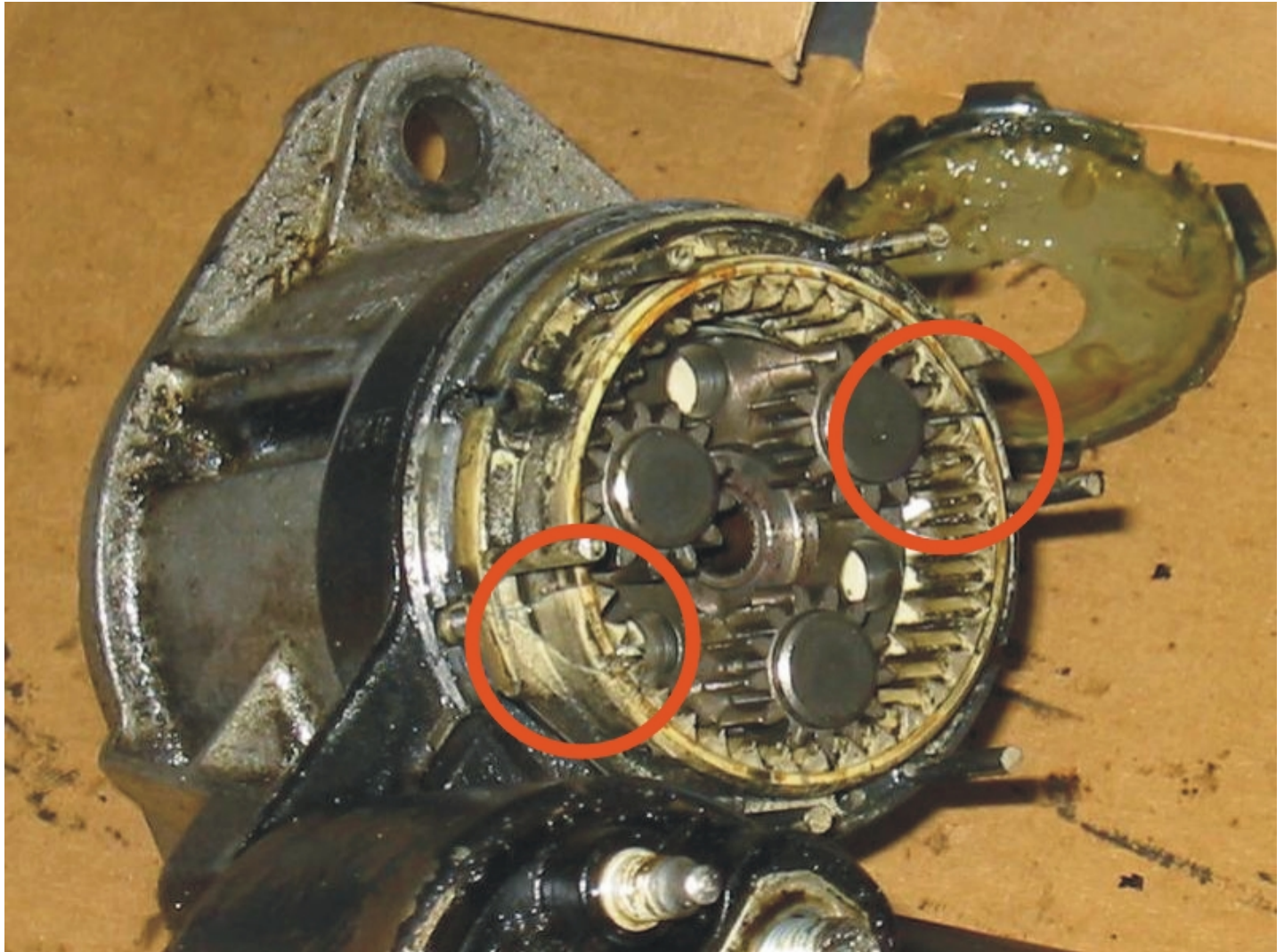
A common failure point of the Scorpio starter is this plastic gear piece (cradle?). Cracks are circled in red. New pieces should be available. Check local auto component rebuilders for price and shipping time. Mine was under \$10; 2 or 3 days to order it in.

Two Scorpio starters I've seen are labeled

0 001 108 035 and

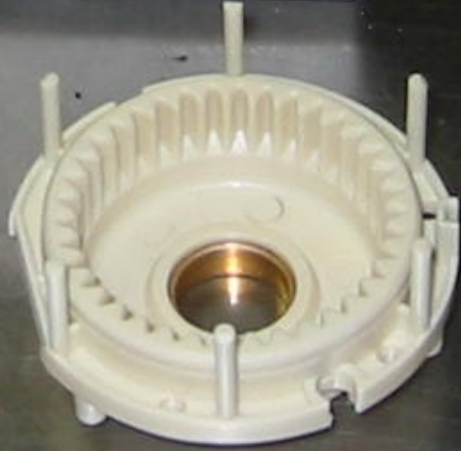
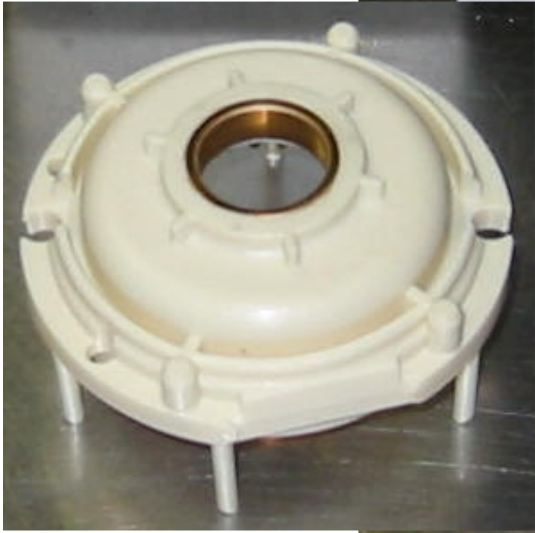
0 004 108 084.

I think the difference is in the solenoid connector terminal.





Repair part looks thusly:



INDEX