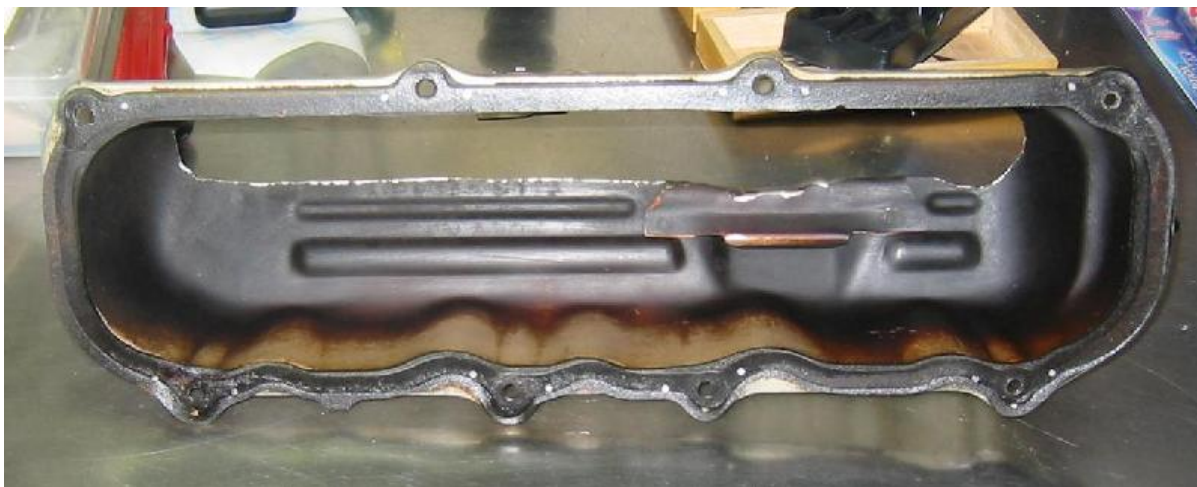
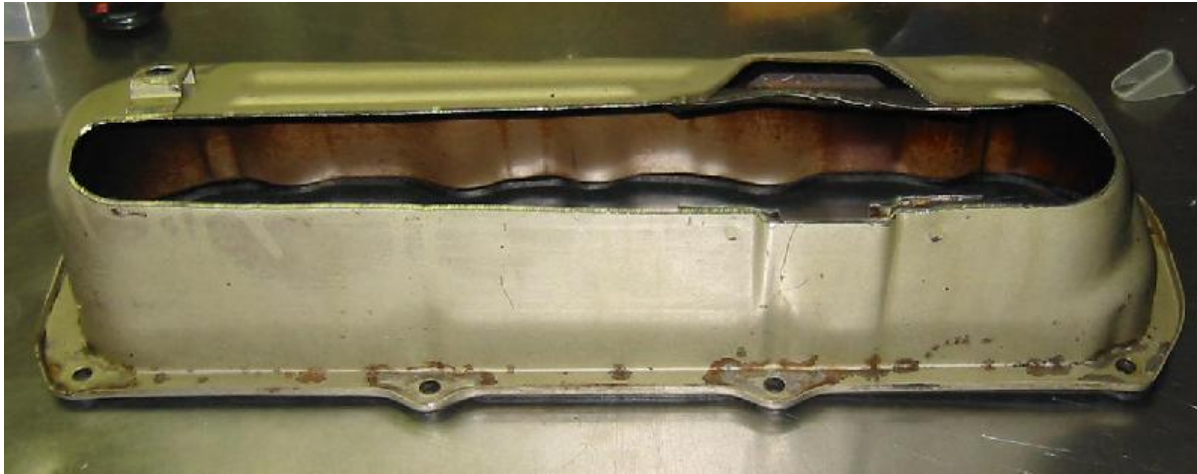


Valve Adjustment _____

Adjusting the valves can be a little tedious, so I figured out a way to speed things up- adjust them with the motor running.

Take an old valve cover and cut a slot down the length, wide enough to access the rocker adjustment.

To adjust, warm the engine first, replace one of the covers with your altered one, start the engine, go straight down the line and adjust to taste. Stop the engine, swap the cover to the other side, repeat. No muss, no fuss.



[INDEX](#)

